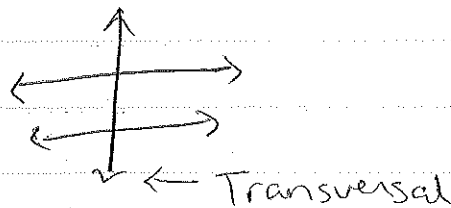


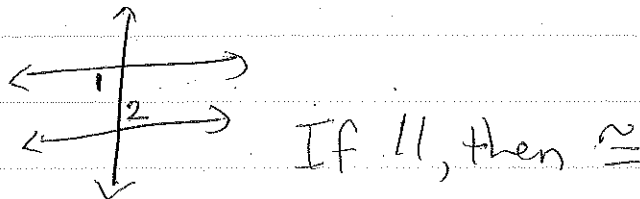
Notes 3.1 – Properties of Parallel Lines

1. Transversal	1. A line that intersects two coplanar lines at two distinct points. Ex:
2. Alternate Interior Angles	2. Two angles between two coplanar lines & nonadjacent opposite sides of transversal. Ex:  If parallel, then
3. Same-side Interior Angles	3. Two angles between two coplanar lines & same side of transversal. Ex:  If parallel, then
4. Corresponding Angles	4. Two angles on same side of transversal, nonadjacent with one between coplanar lines and one outside of the coplanar lines. Ex.  If parallel, then
5. Alternate Exterior Angles	5. Two angles outside two coplanar lines & nonadjacent opposite sides of transversal. Ex:  If parallel, then
6. Same-side Exterior Angles	6. Two angles outside two coplanar lines & same side of transversal. Ex:  If parallel, then

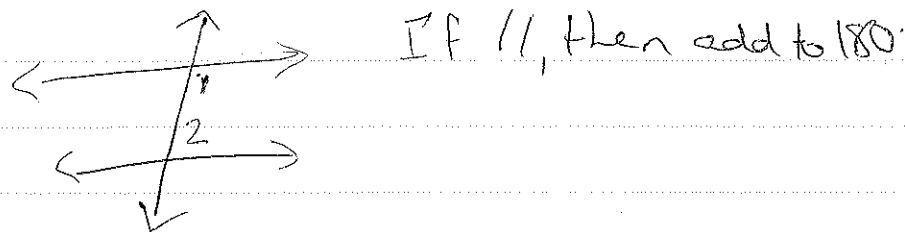
Transversal



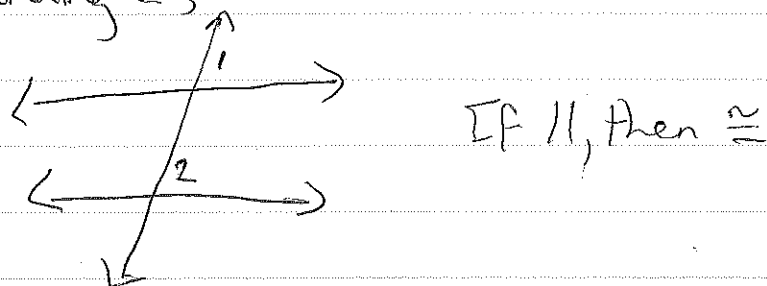
Alt. Int



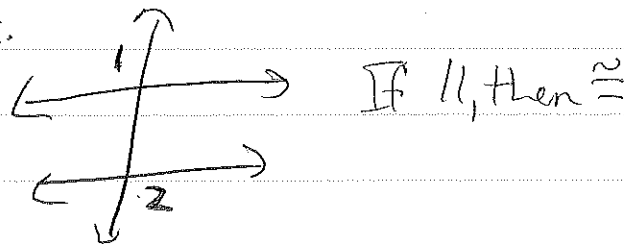
Same side int.



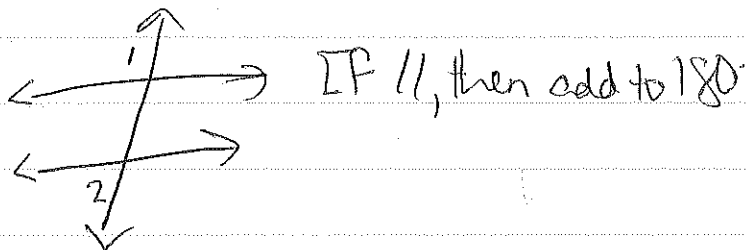
Corresponding  $\angle$ 's

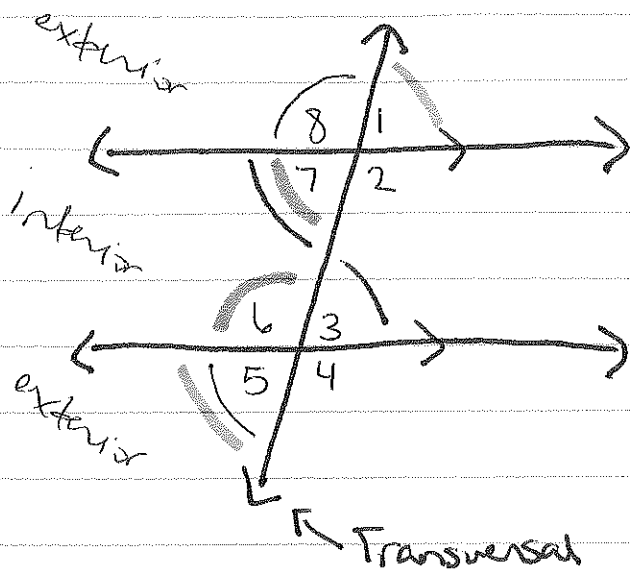


Alt. ext.



Same side ext





- corresponding
- same side int.
- same side ext.
- alt. int.
- alt. ext.

Arrows = //